

*insta*  
**house**  
MODULAR SOLUTIONS



# BUSINESS PROPOSAL

Custom made modular solutions for wholesale

# Modular houses & premises

Our company has been working on modular houses and premises. Recently we have opened a brand new factory with new possibilities and are looking for wholesale partners. We are located in the geographic center of Europe, in the city of Utena (Lithuania) and we wish to join the market with high quality and inexpensive modular solutions building houses and premises.



MOBILE OFFICE



MODULAR HOUSE



OTHER PREMISES

Our advantage - is agility. Our factory could offer bespoke floor plan & finishes on our modular homes & premises for the competitive market price. Attention to details and quality standards is our priority.

We hope, that this business proposal & introduction about us will be useful & interesting to you and we could become business partners. We would appreciate if you would contact us at yours earliest convenience. Looking forward to hearing from you.

insta  
house  
MODULAR SOLUTIONS





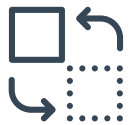


# OUR ADVANTAGES



## PROFESSIONAL TEAM

Architects, designers, constructors, builders & other specialists joined knowledge & experience.



## AGILITY & ADAPTIVITY

Small team let us quickly react to client needs & adapt to changes.



## BESPOKE FLOORPLANS

We could make your custom floorplans & finishes. That you have everything you want



## SPEED

Our process, team & amazing location. Best quality much more quickly.



## MULTIPURPOSE

All our cabins have many ways to be used. Mobile office, on site wet room, temporary house, school, emergency shelter or as permanent living house frame.



## QUALITY & STRENGTH

Only the best quality. Built strong and tough. You could move your cabin as many times as you wish. Metal frame helps.

# MOBILE CABINS



24 M<sup>2</sup>

8400x  
2900x  
3000

230-  
400V



## AMENITIES

Water, electricity, plumbing, locks, windows, vents, AC etc.



## JOINS & STACKS

Cabins could join together or could be stacked on each other to form bigger structure.



## FINISHED

Finishing level depends on your request. from walls only to fully furnished.



## CUSTOM FLOORPLAN

We have sample floorplans, but we could design something just for you.

# FLOORPLANS

insta  
house  
MODULAR SOLUTIONS



C10

-No internal walls



C11

-1 internal wall



C12

-2 internal walls



C3WC

- 3 WC
- 6 lockers
- end door
- no internal walls



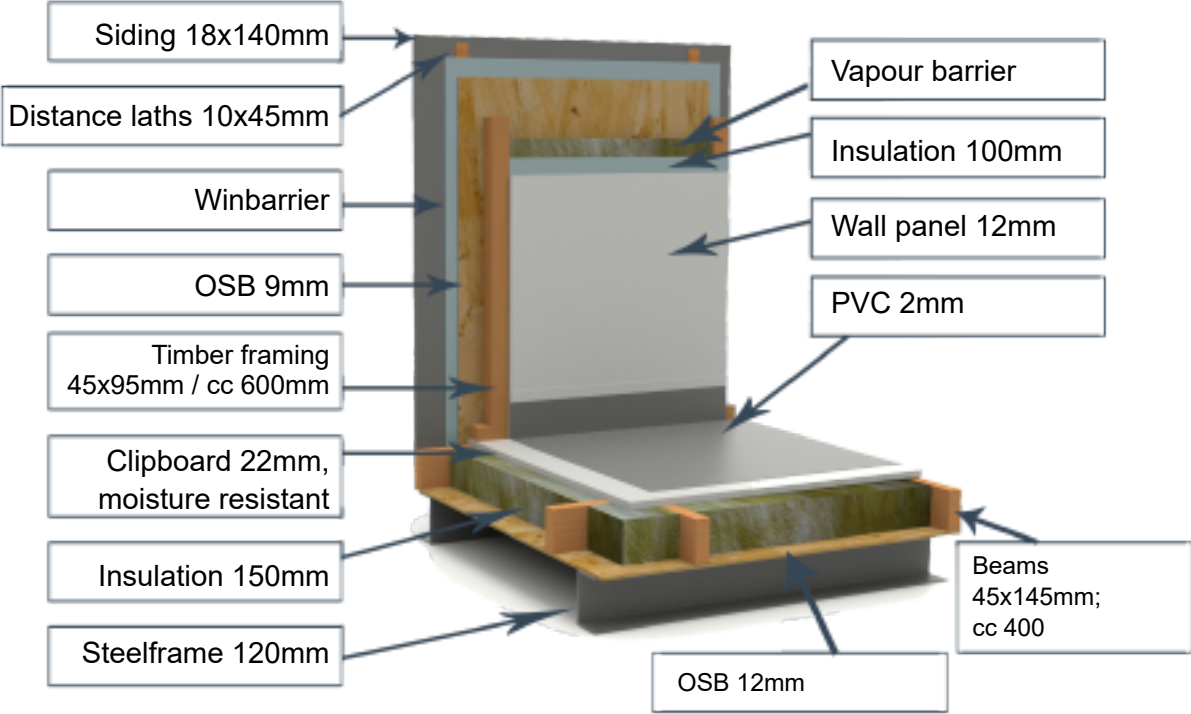
C6DW

- WC
- shower
- 6 lockers
- 1 internal wall

# CONSTRUCTION

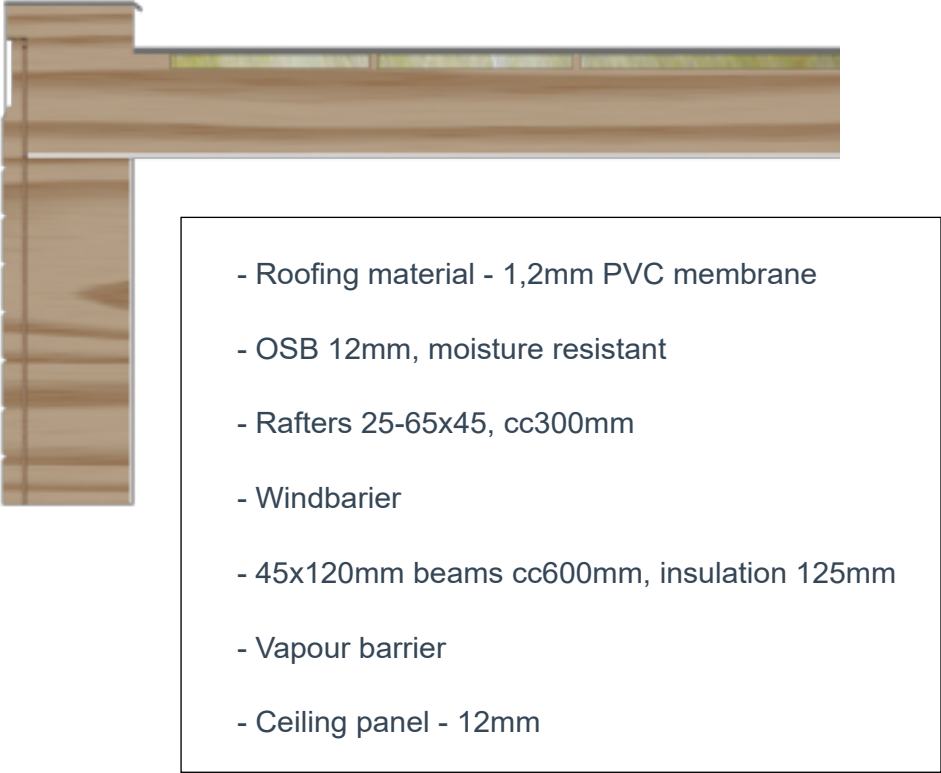
The houses are equipped with electric heaters and ventilation system. In addition, they may also be equipped with heat exchangers, furniture, window security bars, door security gates, household appliances, kitchenware etc.

## SANDWICH MATERIAL



The houses may be painted in your desirable color, they may have different floor plans, and may be produced and equipped according to your requirements. Here are a few examples of possible projects.

## ROOF

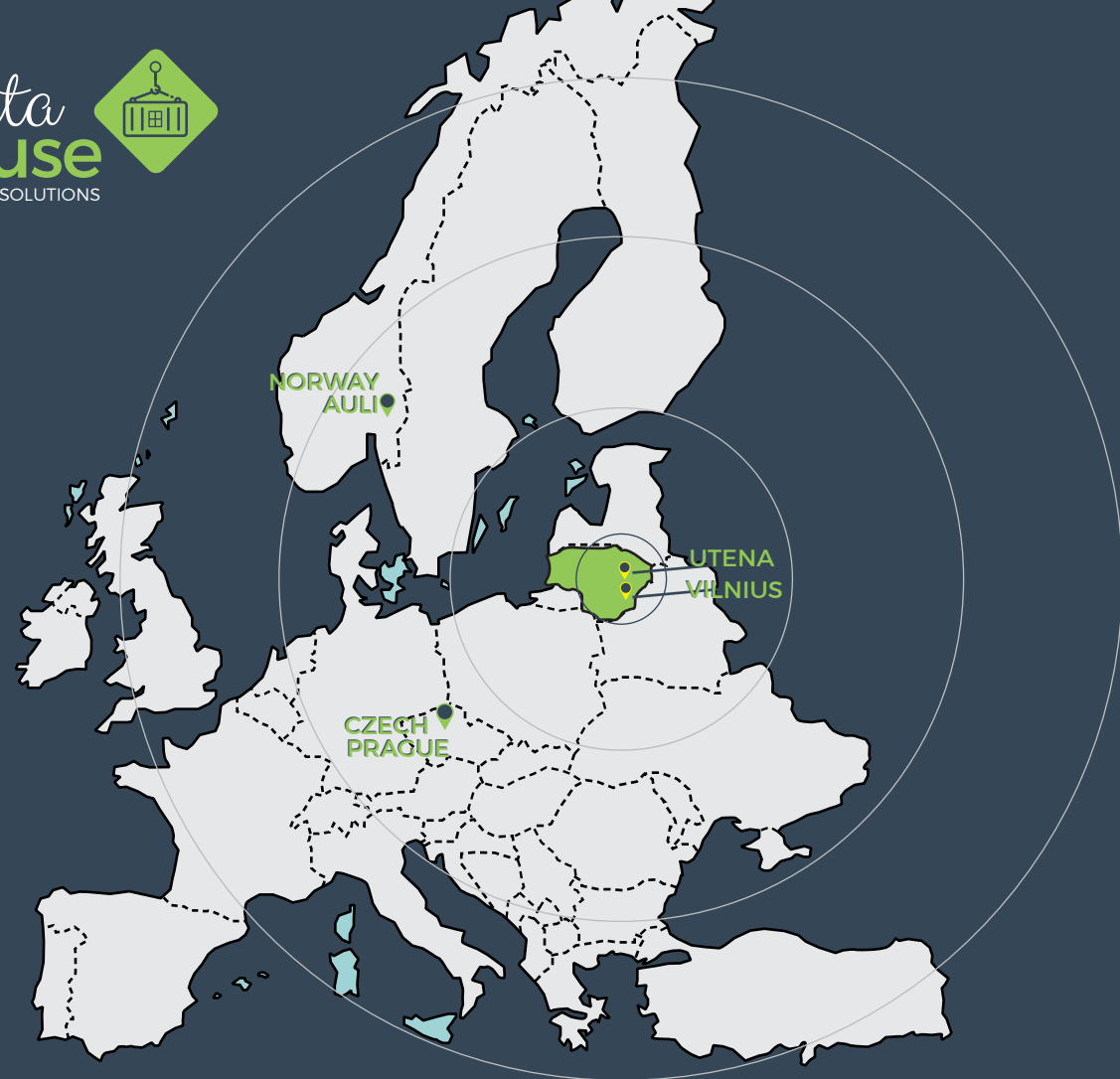






# CONTACT US

insta  
house  
MODULAR SOLUTIONS



## VILNIUS OFFICE / HEADQUARTERS

+370 698 40740  
VERKIŲ 39, LT-09109  
VILNIUS, LITHUANIA  
INFO@INSTAHOUSE.EU  
WWW.INSTAHOUSE.EU

## FACTORY IN UTENA

METALO ST. 3, UTENA,  
LT-28216, LITHUANIA  
WWW.INSTAHOUSE.EU

## NORWAY OFFICE

+47 967 32 936  
NORDBYVEGEN 44  
1929 AULI, NORGE  
NORWAY@INSTAHOUSE.EU  
WWW.INSTAHOUSE.EU

## CZECH REPUBLIC OFFICE

+420 777352252  
HRÁSKÉHO 1908/7, 148 00,  
PRAGUE, CZECH REPUBLIC  
CZECH@INSTAHOUSE.EU  
WWW.INSTAHOUSE.EU